

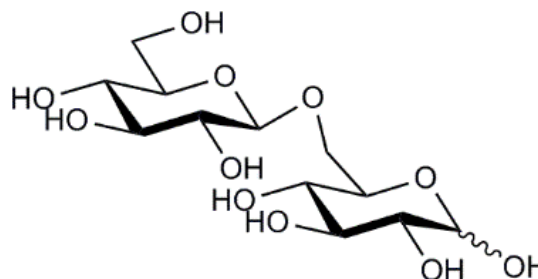


## GENTIOBIOSE (Lot 161202)

**O-GENT**

12/16

**CAS:** 554-91-6  
**Molecular Formula:**  $C_{12}H_{22}O_{11}$   
**MW:** 342.3



**PURITY:** > 99 %

**HPLC:**

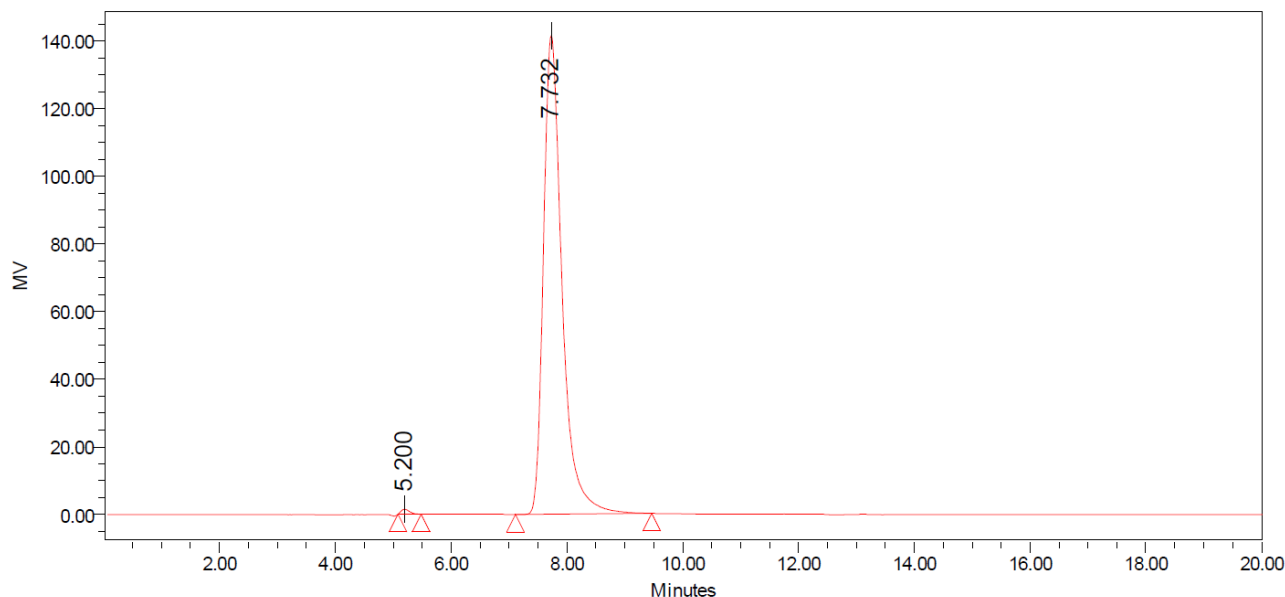
Column: Waters SugarPak I (6.5 x 300 mm)

Temperature: 90°C

Mobile phase:  $dH_2O$  with disodium calcium EDTA (50 mg/L) [Sigma Cat No. ED2SC]

Flow rate: 0.5 mL/min

HPLC system: Waters Breeze system, Waters 2410 RI detector and Empower v 3 software



**Peak Name:**

	Injection	RT	Area	% Area	Height
1	1	7.732	3141940	99.51	141585
2	1	5.200	15540	0.49	1512

**HPAEC-PAD:**

Column: CarboPac PA200 guard and analytical columns (3 x 250 mm)

Temperature: 30°C

Detector: Au electrode; waveform Carbohydrate, standard quad

Flow rate: 0.5 mL/min

IC system: Dionex ICS5000 + DP system and Chromeleon 7 software

A stepwise linear gradient method was employed as shown.

Time (min)	100 mM NaOH (%)	120 mM NaOAc in 100 mM NaOH (%)
0	100	0
5	55	45
9	30	70
10	0	100
18	0	100
19	100	0
30	100	0

