

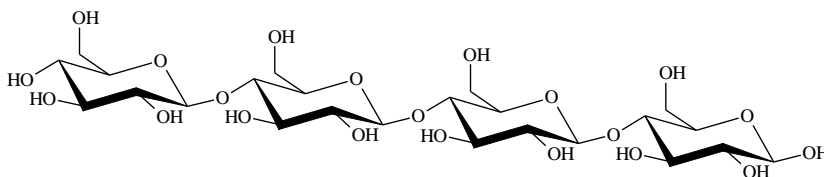


CELLOTETRAOSE (Lot 180404a)

O-CTE-50MG

02/19

MW: 666.58
CAS: 38819-01-1



PREPARATION:

Prepared by controlled acid hydrolysis of cellulose acetate.

PURITY: > 90%

HPLC:

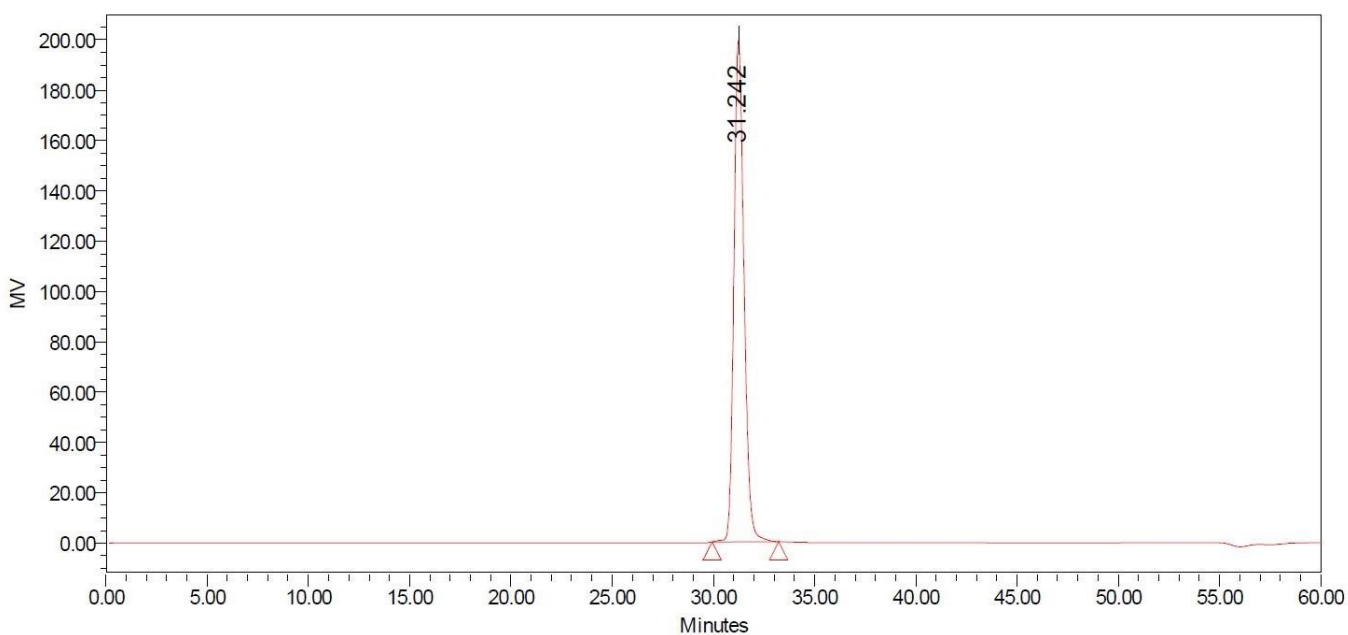
Column: 2 x Tosoh TSK-GEL G2500 PWXL (7.8 x 300 mm) plus guard column (7.8 x 35mm)

Temperature: 80°C

Mobile phase: dH₂O

Flow rate: 0.5 mL/min

HPLC System: Waters Alliance e2695 Separations Module, Waters 2414 RI detector and Empower v 3 software



Peak Name:

	Injection	RT	Area	% Area	Height
1	1	31.242	6906801	100.00	199328

HPAEC-PAD:

Column: CarboPac PA200 guard and analytical columns (3 x 250 mm)

Temperature: 20°C

Detector: Au electrode; waveform Carbohydrate, standard quad

Flow rate: 0.4 mL/min

IC system: Dionex ICS5000+ DP system and Chromeleon 7 software

A stepwise linear gradient method was employed as shown.

Time (min)	100 mM NaOH (%)	120 mM NaOAc (%)
0	100	0
4	100	0
5	80	20
8	65	35
21	50	50
23	0	100
26	0	100
27	100	0
30	100	0

