



CELLOTETRAOSE (Lot 182104)

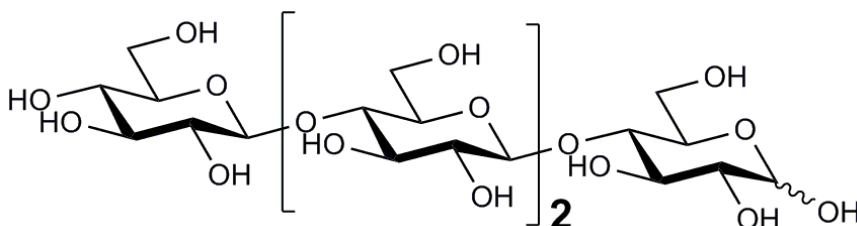
O-CTE-100MG

05/19

CAS: 38819-01-1

Molecular Formula: $C_{24}H_{42}O_{21}$

MW: 666.6



PREPARATION:

Prepared by controlled acid hydrolysis of cellulose acetate.

PURITY: > 90%

HPLC:

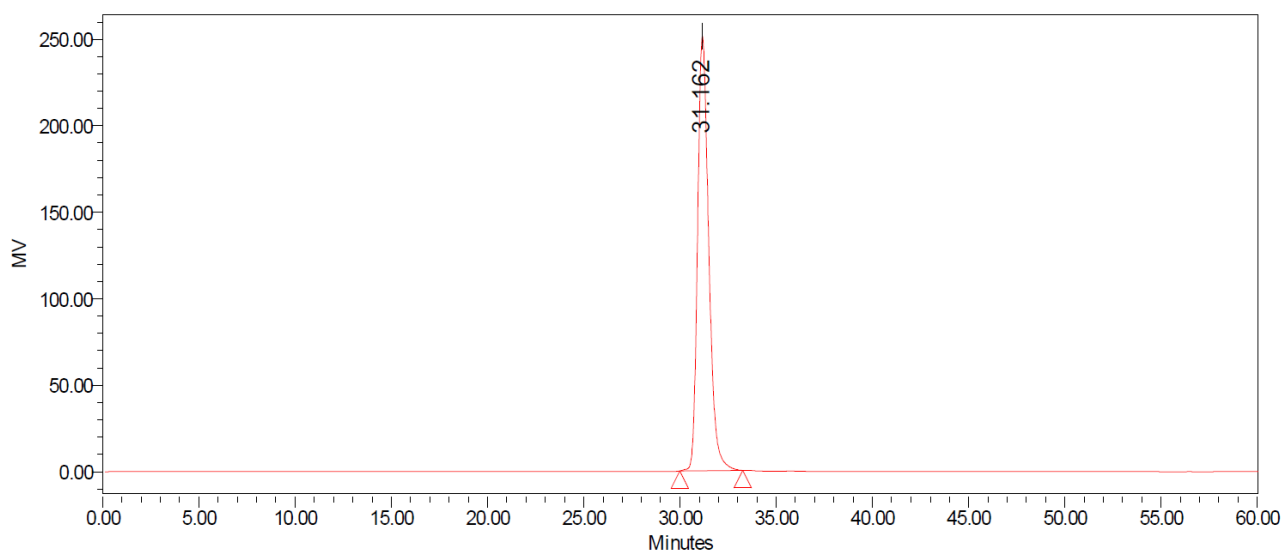
Column: 2 x Tosoh TSK-GEL G2500 PWXL (7.8 x 300 mm) plus guard column (7.8 x 35 mm)

Temperature: 80°C

Mobile phase: dH_2O

Flow rate: 0.5 mL/min

HPLC System: Waters Alliance e2695 Separations Module, Waters 2414 RI detector and Empower v 3 software



Processed Channel: 410

	Processed Channel	Retention Time (min)	Area	% Area	Height
1	410	31.162	10110865	100.00	251382

HPAEC-PAD:

Column: CarboPac PA200 guard and analytical columns (3 x 250 mm)

Temperature: 20°C

Detector: Au electrode; waveform Carbohydrate, standard quad

Flow rate: 0.4 mL/min

IC system: Dionex ICS5000 + DP system and Chromeleon 7 software

A stepwise linear gradient method was employed as shown.

Time (min)	100 mM NaOH (%)	120 mM NaOAc (%)
0	100	0
4	100	0
5	80	20
8	65	35
21	50	50
23	0	100
26	0	100
27	100	0
30	100	0

