

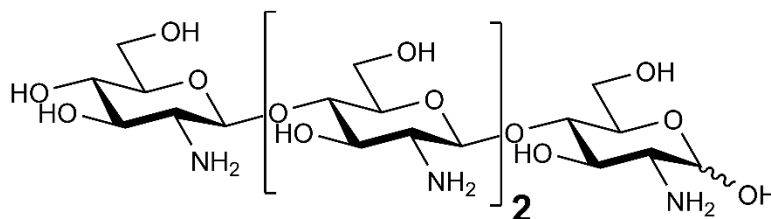


## CHITOSANTETRAOSE (Lot 191204)

O-CHIS4

12/19

**Molecular Formula:**  $C_{24}H_{46}N_4O_{17}$   
**MW:** 662.6  
**CAS:** 117399-50-5



**PURITY:** > 90% (HPAEC-PAD)

**HPAEC-PAD:**

Column: CarboPac PA100 guard and analytical columns (3 x 250 mm)

Temperature: 30°C

Detector: Au electrode; waveform Carbohydrate, standard quad

Flow rate: 0.4 mL/min

IC system: Dionex ICS5000 + DP system and Chromeleon 7 software

An isocratic gradient method was employed as shown

Time (min)	200 mM NaOH (%)	H <sub>2</sub> O (%)
0	10	90
35	10	90

