

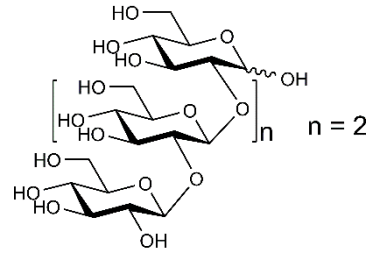


SOPHOROTETRAOSE (Lot 190704)

O-SOPH4

07/19

Molecular Formula: $C_{24}H_{42}O_{21}$
MW: 666.6
CAS: -



PURITY: > 95% (HPLC)

HPLC:

Column: Shodex Asahipak NH2P-40 3E analytical column

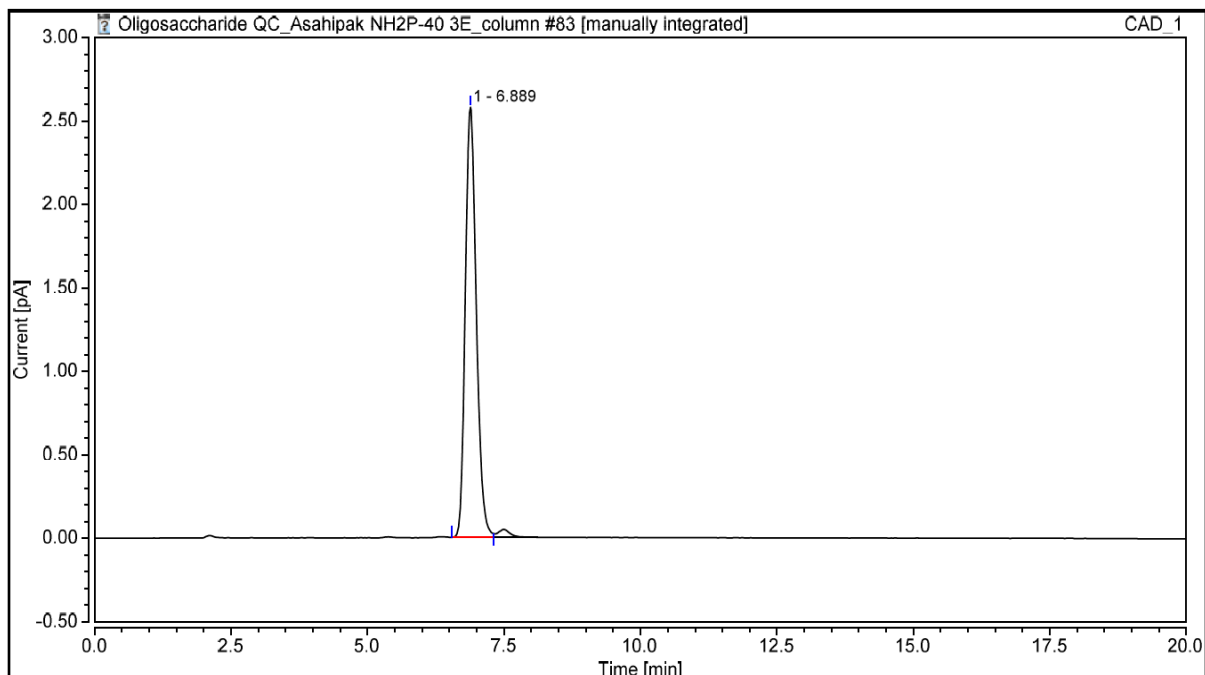
Temperature: 35°C

Flow rate: 0.35 mL/min (Eluent gradient shown below)

Detector: CAD (Charged Aerosol Detector)

HPLC System: Thermofisher U3000 Ultimate and Chromeleon v 7.0 software

| Time (min) | H ₂ O (%) | CH ₃ CN (%) |
|------------|----------------------|------------------------|
| 0 | 40 | 60 |
| 1 | 40 | 60 |
| 14 | 60 | 40 |
| 16 | 40 | 60 |
| 20 | 40 | 60 |



HPAEC-PAD:

Column: CarboPac PA200 guard and analytical columns (3 x 250 mm)

Temperature: 30°C

Detector: Au electrode; waveform Carbohydrate, standard quad

Flow rate: 0.4 mL/min

IC system: Dionex ICS5000 + DP system and Chromeleon 7 software

A stepwise linear gradient method was employed as shown.

| Time (min) | 100 mM NaOH (%) | 120 mM NaOAc in 100 mM NaOH (%) | H ₂ O (%) |
|------------|-----------------|---------------------------------|----------------------|
| 0 | 25 | 0 | 75 |
| 10 | 25 | 0 | 75 |
| 22 | 23 | 2 | 75 |
| 23 | 0 | 50 | 50 |
| 25 | 0 | 100 | 0 |
| 26 | 25 | 0 | 75 |
| 30 | 25 | 0 | 75 |

