

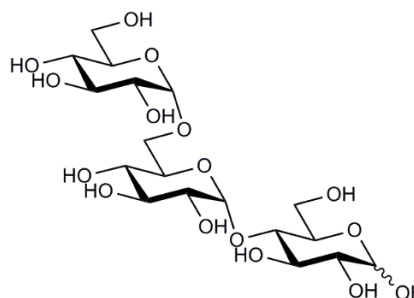


## PANOSE (Lot 181203)

**O-PAN-IG**

**02/19**

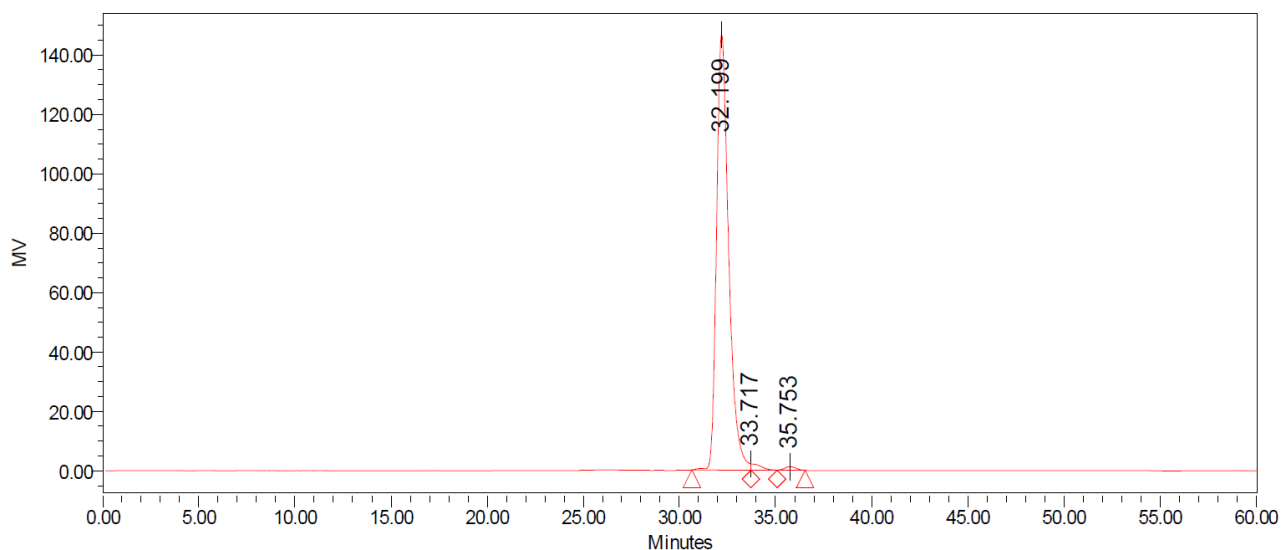
**Molecular Formula:**  $C_{18}H_{32}O_{16}$   
**MW:** 504.4  
**CAS:** 33401-87-5



**PURITY:** > 95% (HPLC)

**HPLC:**

Column: 2 x Tosoh TSK-GEL G2500 PWXL (7.8 x 300 mm) plus guard column (7.8 x 35mm)  
 Temperature: 80°C  
 Mobile phase:  $dH_2O$   
 Flow rate: 0.5 mL/min  
 HPLC System: Waters Alliance e2695 Separations Module, Waters 2414 RI detector and Empower v 3 software



**Processed Channel: 410**

|   | Processed Channel | Retention Time (min) | Area    | % Area | Height |
|---|-------------------|----------------------|---------|--------|--------|
| 1 | 410               | 32.199               | 6424989 | 98.07  | 146489 |
| 2 | 410               | 33.717               | 77270   | 1.18   | 2102   |
| 3 | 410               | 35.753               | 49163   | 0.75   | 1230   |

**HPAEC-PAD:**

Column: CarboPac PA200 guard and analytical columns (3 x 250 mm).

Temperature: 30°C

Detector: Au electrode; waveform Carbohydrate, standard quad

Flow rate: 0.5 mL/min

IC system: Dionex ICS5000+ DP system and Chromeleon 7 software.

A stepwise linear gradient method was employed as shown.

| Time (min) | 100 mM NaOH (%) | 120 mM NaOAc in 100 mM NaOH (%) |
|------------|-----------------|---------------------------------|
| 0          | 100             | 0                               |
| 5          | 55              | 45                              |
| 9          | 30              | 70                              |
| 10         | 0               | 100                             |
| 18         | 0               | 100                             |
| 19         | 100             | 0                               |
| 30         | 100             | 0                               |

